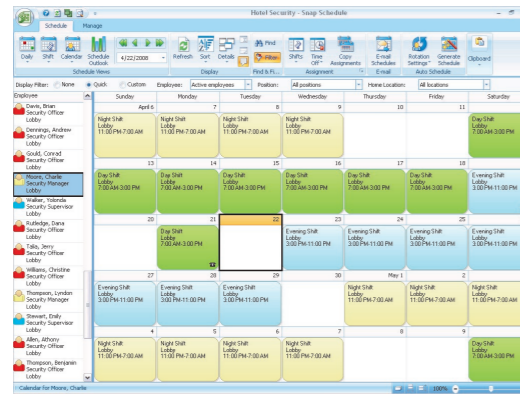


# Snap Schedule™ 2008



## SNAP SCHEDULE

### MINIMUM SYSTEM REQUIREMENTS

- Computer** PC with a Pentium® III 800 MHz or faster processor
- Memory (RAM)** 512 MB or more of RAM highly recommended
- Hard disk** Hard disk usage will vary depending on the number of shift assignments, employees, and other records. 80 MB of available hard-disk space is required for installation. A 20 GB hard disk is recommended.
- Display** Super VGA (1,024x768) or higher-resolution video adapter and monitor.
- Drive** A writable CD/DVD drive is recommended for data backup.
- Other devices** Microsoft Mouse or compatible pointing device.
- Operating System** Windows® XP with Service Pack 2 or later, or Windows Vista (all editions), or Windows Server 2003 Service Pack 1 or later, or Windows Small Business Server 2003 with Service Pack 1 or later.

## ABOUT BUSINESS MANAGEMENT SYSTEMS

The engineering and software development professionals now running Business Management Systems rocked the small-business software world by winning five Microsoft awards for software excellence over four years of constant product enhancement.

This team's software line spread over five continents through a network of VARs. Intuit, IBM and Compaq became business partners and allies. A CNN Town Meeting broadcast described how their software and the Internet empowered small businesses to succeed against giants. The team's SMB solutions were acquired by the world's largest software company, and continue to expand to small businesses around the world.

From this heritage of development excellence Snap Schedule and Business Appointment Manager software products were born. No other company before or since has achieved those recognitions for the development of practical and useful business software.



P.O. Box 17188 Anaheim, CA 92807  
(800) 450-4230 [www.bmscentral.com](http://www.bmscentral.com)



## Discover more ways to stay on schedule

To begin exploring the benefits of Snap Schedule for your organization, visit us online at [www.bmscentral.com](http://www.bmscentral.com)

# Technology at work for you

SCHEDULING EMPLOYEES HAS NEVER BEEN THIS EASY!

Snap Schedule is the employee scheduling software that you've been waiting for! Its Office 2007 style interface, drag-and-drop scheduling, and automatic schedule generation let you easily create optimal shift schedules for your employees. Snap Schedule's innovative multi-view schedule planner gives you multiple vantage points to view and interact with employee schedules and proactively manage daily staffing.

## KEY BENEFITS

- REDUCES LABOR COSTS WITHOUT SACRIFICING CUSTOMER SERVICE
- LESS TIME SPENT ON DEVELOPING WORK SCHEDULES AND DAY-TO-DAY CHANGES
- ENSURES COMPLIANCE WITH UNION RULES, GOVERNMENT REGULATIONS, AND OTHER MANAGEMENT OBJECTIVES
- IMPROVES WORK-LIFE BALANCE AND EMPLOYEE SATISFACTION
- SCHEDULING AND EMPLOYEE INFORMATION ALL IN ONE PLACE FOR COMPLETE REPORTING AND ANALYSIS



### Intuitive, easy to use

You already know how to use Snap Schedule, thanks to its Microsoft Office 2007 user interface style. Commands for tasks you frequently perform are logically organized and plainly visible in the Ribbon. Color coded shifts, time off reasons, and staff positions make it easy to organize assignments and identify shift patterns.

### Multi-view schedule planner

View assignments and schedule employees from three different vantage points. The Daily view shows all shift and time off assignments for each employee for each day in the specified period. The Shift view shows employee staffing for each shift along with coverage summary for each job position. The Calendar view presents work and time off assignments for each employee similar to a calendar or monthly planner.

### Easy drag and drop scheduling

Easily assign shifts, mark time off, move or copy assignments with a simple drag & drop. Even split shifts, multiple shifts, paid/unpaid time off, and on calls are all supported. You can schedule with confidence because Snap Schedule automatically alerts you to any scheduling conflicts. Quickly and efficiently fill a shift or find a substitute based on availability, labor cost, work hour limits, seniority, and other criteria.

### No limits on employees, shifts, and time off requests

No limits on the number of employees, positions, shifts, locations and assignments you can create. Define skill sets and authorized work locations for each employee and keep track of employees' availability and work hour preferences.

### Automatically generate work schedules

The Auto-scheduling Wizard saves time and speeds up employee scheduling tasks. You can easily model and generate any fixed and rotating shift schedule using user-definable shift patterns and rotation tables. Use built-in visual tools for shift schedule design. Preview the generated work schedules and make changes as necessary before committing assignments to the schedule file.

### Report, print, export, and email work schedules

Automatically e-mail schedules to employees. Print Daily, Shift, and Calendar schedule spreadsheets, as well as shift assignment reports to communicate schedule information to your employees. Easily publish schedules and any report in PDF and a variety of other formats. Reports are active, meaning you can drill-down on embedded hyperlinks for more details, include or exclude specific information, and make changes to the underlying data. Customize reports to fit your needs.



## ROCK SOLID PERFORMANCE

Snap Schedule is built on the latest Microsoft® .Net, Office®, and secure, scalable SQL Server database technologies. This means you get a modern, seamlessly integrated, rock-solid software tool that will save you time and money.



## GET THE COMPETITIVE EDGE

Why struggle every day to plan and match your employees to the constantly changing work load using inefficient, paper-based systems, Excel spreadsheets or outdated programs? When you choose Snap Schedule, you choose a comprehensive, best-in-class scheduling solution that is easy to use, install and deploy. Our customers trust us because our software solutions work and deliver bottom-line benefits with a rapid return on investment.



## TRY IT FREE FOR 30 DAYS

We're confident that Snap Schedule is the easiest employee scheduling software you'll ever use. Visit [www.bmscentral.com](http://www.bmscentral.com) and download a free 30-day trial copy to see for yourself. At any time, you can purchase a license online and turn your trial into unlimited use without losing any data that you have setup.